


# JSPS Alumni Association



 **India (IJAA)**  
<https://indianjspsalumni.org/>

 **Bangladesh (BJSPSAA)**

 **Thailand (JAAT)**  
<https://jaatthailand.wordpress.com/>

 **Philippines (JAAP)**  
<https://www.facebook.com/jaapconnect>

 **Nepal (NJAA)**  
<https://www.njaa.org.np/>

 **Indonesia (JAAI)**  
<https://jaai-jsps.org>

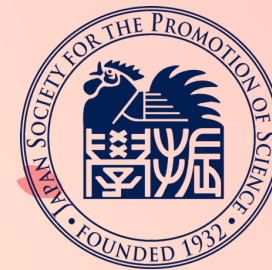
 **Malaysia (JAAM)**  
<https://web.facebook.com/profile.php?id=100067377552496>

## JSPS BANGKOK OFFICE

### Contact us

Contact address: 1016/3, 10F, Serm-mit Tower, 159 Sukhumvit Soi 21,  
Bangkok 10110 Thailand Tel : +66-2-661-6533  
E-mail: [bkk@overseas.jsps.go.jp](mailto:bkk@overseas.jsps.go.jp) URL: [www.jsps-th.org](http://www.jsps-th.org)  
Facebook: JSPS Bangkok Office

Graphic Designed by Freepik



South and South East Asia  
-Japan  
Academic Exchange Hub

# JSPS BANGKOK OFFICE



Bangkok Office original character "Su-Su"

Fostering Researchers of  
New Generation  
With Pioneering New Knowledge

### What is JSPS

<https://www.jsps.go.jp/english/>



- Established in 1932
- Is Japan's core funding agency
- Places high value on both researcher autonomy and research diversity

### What does JSPS support

- From basic to applied research conducted based on the free ideas of researchers.
- Covers the entire spectrum of academic fields including humanities, social sciences, and natural sciences.

### What is JSPS Bangkok Office

[https://jsps-th.org/jsps\\_en/](https://jsps-th.org/jsps_en/)



JSPS Bangkok Office was established in 1989. It covers South and South East Asia for developing academic networks with Japan. The activities are as follows:

- Disseminate information on JSPS fellowships and research support programs
- Support JSPS alumni association activities
- Collect information on sciences in South and South East Asia
- Support young researchers to join JSPS programs
- Support research exchange of Japanese universities and institutes
- Collaborate various organizations for the promotion of exchange with Japanese researchers

# South and South East Asia -Japan “Heart-to-Heart” Relations Through JSPS Programs

## Career Stages of Researchers

■ Ph.D. Students/Postdocs

■ Within 6 years after Ph.D.

■ Mid career-Professor

### Pre-/Post-doctoral Fellowships for Research in Japan

### Invitational Fellowships for Research in Japan

**New**

#### ① Short-term (PA)

#### ② Standard

#### ③ Short-term

#### ④ Long-term

Applicants

Ph.D. Students/Postdocs

Postdoctoral researchers

Mid-career and senior researchers / Professors

Duration

1 to 12 months

1 to 2 years

14 to 60 days

2 to 10 months

Requirements

- Postdoctoral researchers (Within 6 years after Ph.D.)
- Ph.D. Students (Expected to obtain Ph.D. within 2 years)

※Requirements differ for ASEAN citizens and non-ASEAN citizens.

- Postdoctoral researchers (Within 6 years after Ph.D.)
- No age limit
- No need to have a full-time position at research institutions

- Researcher in a position equivalent to a university professor, associate professor or assistant professor in Japan, or researcher who received their doctorate degree 6 years or more prior

Financial Support

- Round-trip air ticket
- Overseas travel insurance
- Monthly allowance  
Ph.D. holders ¥362,000  
Non Ph.D. holders ¥200,000
- Settling-in allowance of ¥200,000

- Round-trip air ticket
- Overseas travel insurance
- Monthly allowance of ¥362,000
- Settling-in allowance of ¥200,000

- Round-trip air ticket
- Overseas travel insurance
- Daily allowance of ¥18,000

- Round-trip air ticket
- Overseas travel insurance
- Monthly allowance ¥387,600

QR code



<https://www.jsps.go.jp/english/e-fellow/e-asean-africa-s/index.html>



<https://www.jsps.go.jp/english/e-fellow/e-ippan/index.html>



<https://www.jsps.go.jp/english/e-inv/index.html>

## BRIDGE Fellowship Program

Regular members of JSPS alumni association

14 to 30 days

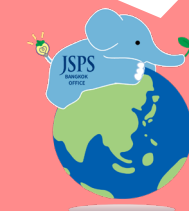
- Researcher who has experienced research in Japan under a JSPS program and is employed at a university or a research institute.

- Round-trip air ticket
- Overseas travel insurance
- Daily maintenance allowance of ¥13,000
- Research support allowance of up to ¥100,000



<https://www.jsps.go.jp/english/e-plaza/bridge/index.html>

Please join a JSPS Alumni Association !



## Bilateral Programs

<https://www.jsps.go.jp/english/e-bilat/index.html>



Bilateral programs in the form of joint research project and seminar.

### 【Bilateral Cooperation Based on MoUs】

- ① Joint Research:  
Up to JPY 2,500,000/year/project for 1-3 years
- ② Joint Seminars:  
Up to JPY 2,500,000/seminar for up to 1 week

### 【Bilateral Cooperation Open Partnership】

- ① Joint Research:  
Up to JPY 2,000,000/year/project for 1-2 years
- ② Joint Seminars:  
Up to JPY 2,000,000/seminar for up to 1 week

## Core-to-Core Program

<https://www.jsps.go.jp/english/e-c2c/index.html>



International program for multilateral research collaboration.(2 or more partner countries)

### 【Advanced Research Networks】

- Target: Any country in the world
- Grants: Up to JPY 18,000,000/year
- Project Duration: 5 years
- \* Partner institutions are required own matching funds.

### 【Asia-Africa Science Platforms】

- Target : Asian or African countries or regions
- Grants : Up to JPY 8,000,000/year
- Project Duration : 3 years
- \* Matching funds of partner institutions are not mandatory.

## How to apply

