

University of Tsukuba

Center for Research on International Cooperation in Educational Development (CRICED)

Khon Kaen Office (hosted by Khon Kaen University)
123 Moo 16 Mittapap Rd., Nai-Muang, Muang District,
Khon Kaen 40002, Thailand

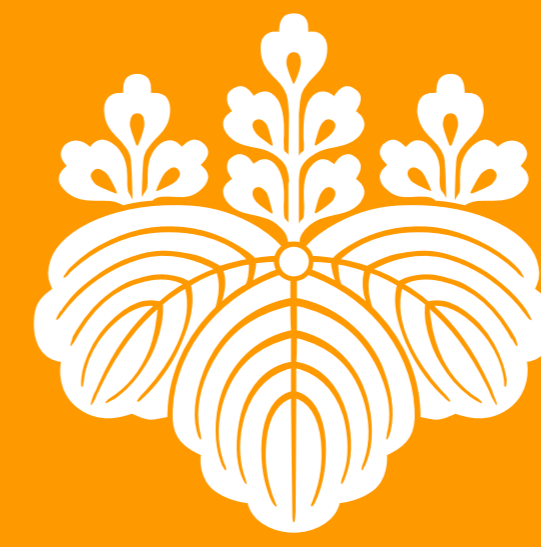
<http://www.tsukuba.ac.jp/en/>
<http://www.criced.tsukuba.ac.jp/en/>



University of Tsukuba



CRICED



筑波大学
University of Tsukuba

CRICED

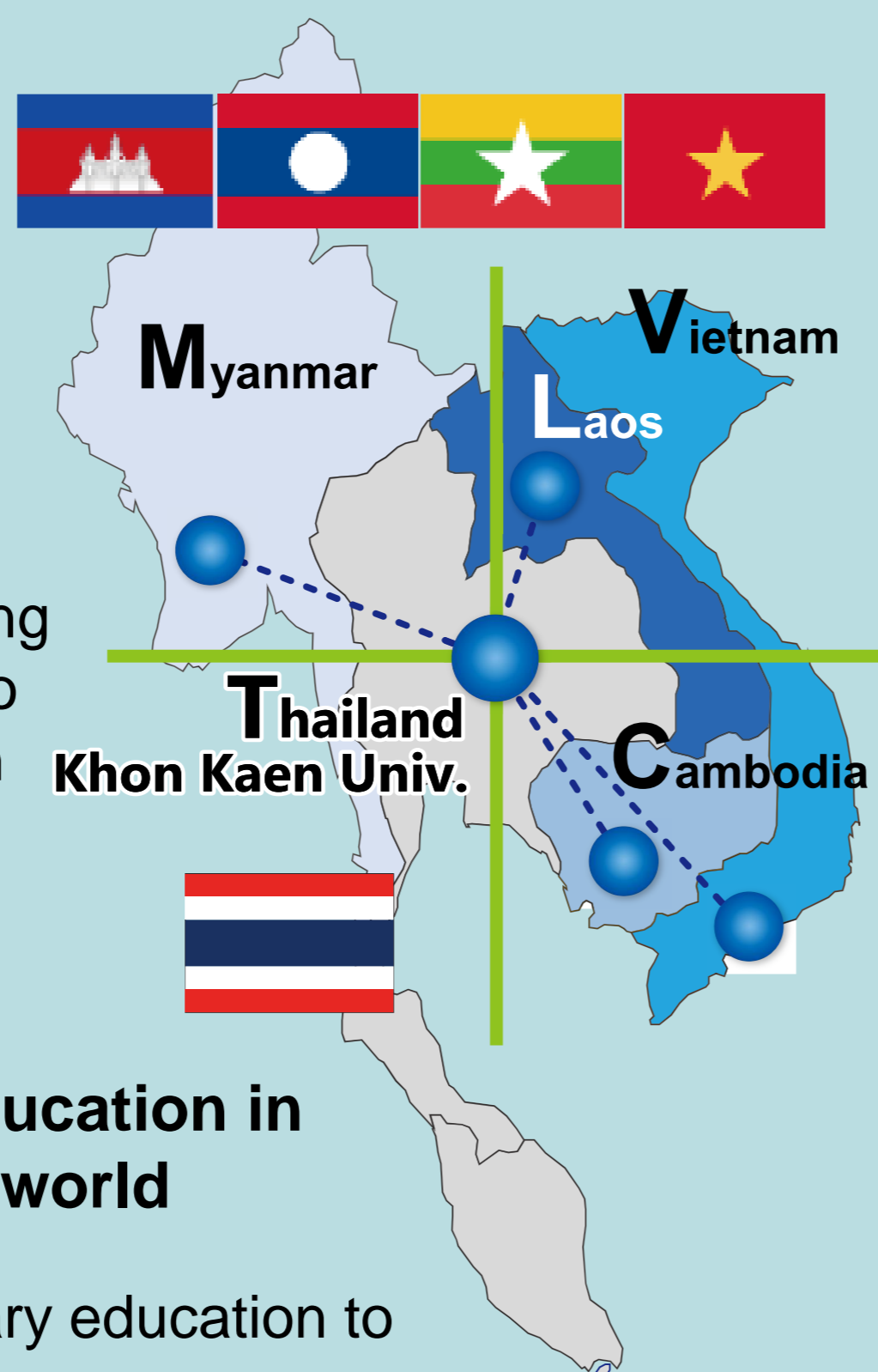
CRICED The Center for Research on International Cooperation in Educational Development

University of Tsukuba is the only university member in Japan for the Southeast Asian Ministers of Education Organization (SEAMEO)*.



*SEAMEO is a regional intergovernmental organization established in 1965 among governments of Southeast Asian countries to promote regional cooperation in education, science and culture in the region.

CRICED has a Khon Kaen Office in the premises of KKU's Institute for Research and Development in Teaching Profession (IRDTP) for ASEAN.



KKU acts as a logistic hub of the Greater Mekong Sub-region (GMS) countries. We have been collaborating using the geographical advantage to further develop Japanese education methods in ASEAN countries.

Sharing the Japanese-style Education in primary education all over the world

- Spreading Japanese-style primary education to the world
- Spreading Japanese-style primary education to the world
- Researches on educational development cooperation model meeting regional needs.
- Providing training for the teachers from the developing countries and Japanese exerts.
- Collaboration with international organizations* and education ministries abroad SEAMEO, APEC, and MGIEP



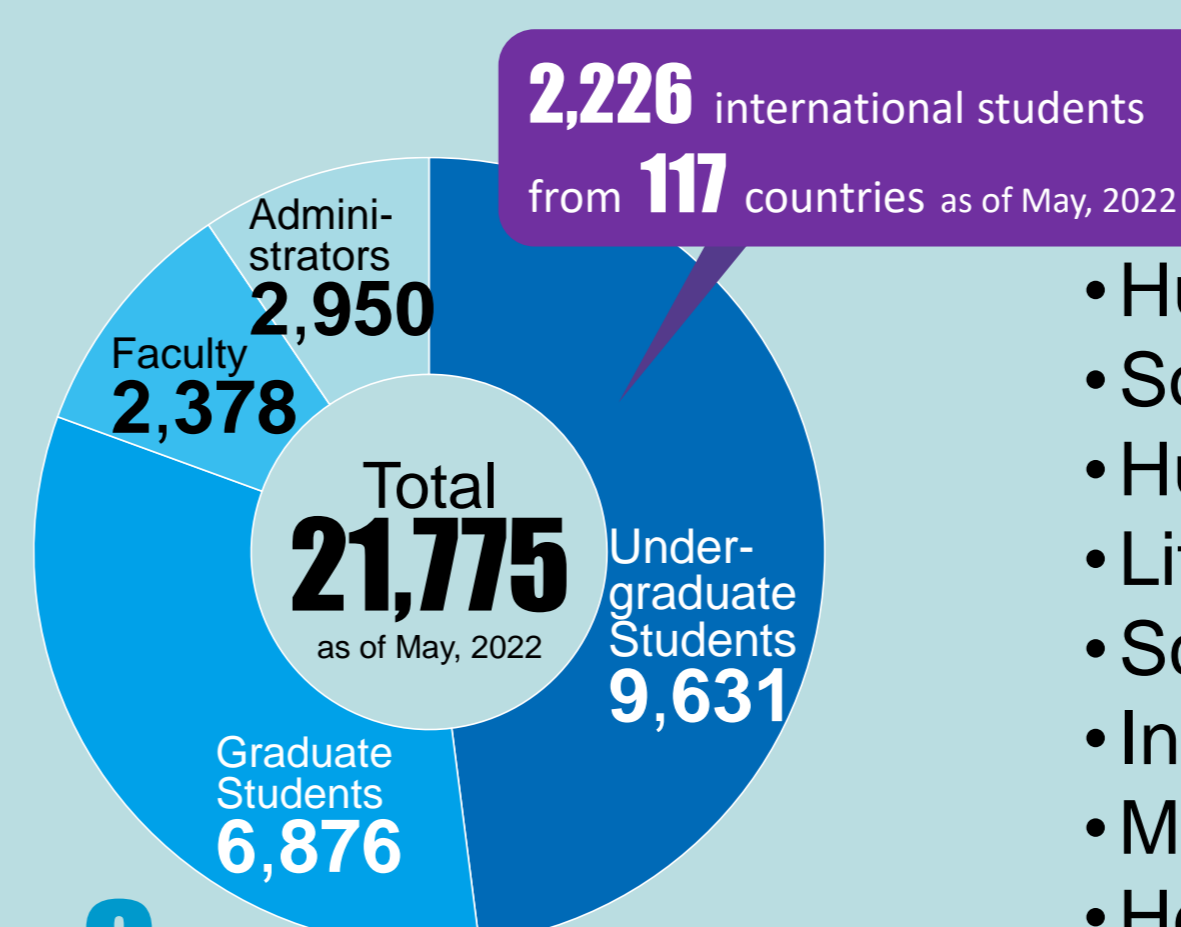
University of Tsukuba

151 Years of History and Tradition
1872 Founded as Higher Normal School
1949 Tokyo University of Education
1973 University of Tsukuba

- A leading national research-oriented university spearheading collaborations across organizational, industrial and national borders
- Relocated in 1973 from Tokyo to Tsukuba Science City, Japan's premier science hub
- Its founding philosophies of fostering transdisciplinary research and education and being open to society are more important than ever in today's environment of accelerating complexity and interconnectivity.



In Numbers



9 Undergraduate Schools

- Humanities and Culture
- Social and International Studies
- Human Sciences
- Life and Environmental Sciences
- Sciences and Engineering
- Informatics
- Medicine and Medical Sciences
- Health and Physical Education
- Art and Design

8 Graduate Schools

- Education
- Humanities and Social Sciences
- Business Sciences
- Pure and Applied Sciences
- Systems and Information Engineering
- Life and Environmental Sciences
- Comprehensive Human Sciences
- Library, Information and Media Studies

1 Integrative School

- School of Integrative and Global Majors (SIGMA)

Our Partner Institutions in Thailand (alphabetical order)

Asian Institute of Technology
Chulalongkorn University
Kasetsart University
Khon Kaen University
King Mongkut's University of Technology Thonburi
Mae Fah Luang University

Maejo University
Office of Judiciary of Thailand
Prince of Songkla University
Srinakharinwirot University
Suranaree University of Technology
Thammasat University

