

Kyoto Institute of Technology



Chiang Mai CMU Office Key Station

Contact address:
239 Huay Kaew Road Muang
District, Chiang Mai 50200
Room No. 313, 3rd floor, main CMU
Graduate School Building
Tel: (6653) 944928

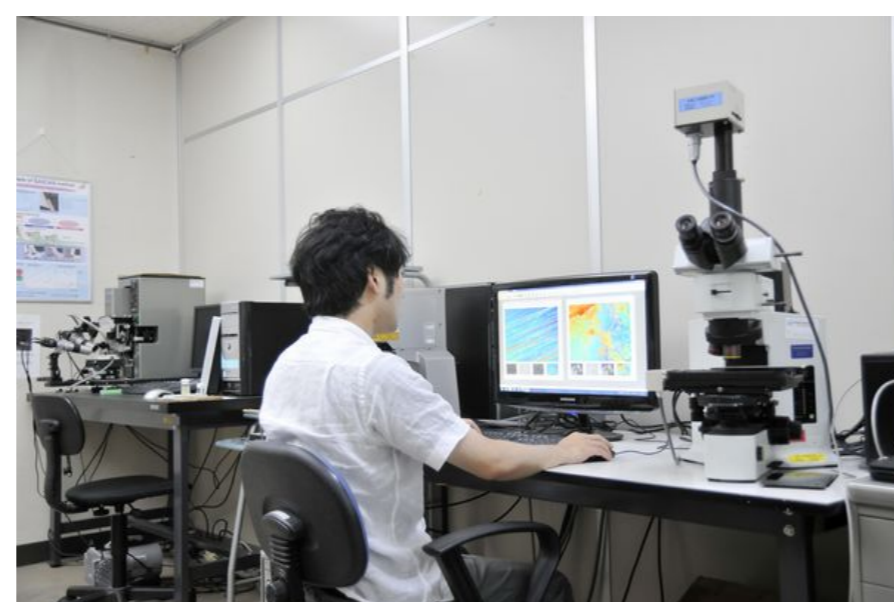
Bangkok Key Station

Contact address:
Chul Thai Silk Co., Ltd.
1897 Soi 39, Phaholyothin Road
Bangken, Bangkok, Thailand
Tel: 02-579-0399

<http://www.kit.ac.jp/>

Kyoto Institute of Technology - Where Science meets Arts -

- * We are a national university.
- * We have: strong ties with traditional culture and Kyoto-area industries; 3,000 Undergraduates, 1,000 Master's and 200 PhD students; 200 International Students.
- * Collaboration with 8 Universities in Thailand!



Fields

- * Materials and Life Science
- * Engineering Design
- * Architecture and Design
- * Fiber Science and Engineering
- * Arts and Sciences

Major activities with Thailand

Education

International graduate program:

- * is taught in English (all courses)
- * accepted 25 students from Thailand at the start of the program (2004)
(second largest number per country, 79 in total)

Workshop with collaboration between Thai and Japanese students (Field of Architecture) Architectural Joint Degree Program with Chiang Mai University

- * started in April 2017
- * is an education program in which a single degree will be granted to each student who has completed the joint curriculum

Research (Example of projects)

Establishment of Asia Insect Biomedical Research Network
(with Chiang Mai University, Mahidol University and other universities in Asia)
Collaborative Research (Field of Mechanical Engineering)



Kyoto Institute of Technology - RMUTT Office

- is located in Rajamangala University of Technology Thanyaburi
- conducts workshops in the field of Architecture
- conducts seminars in the field of Fiber Science and Engineering

Kyoto Institute of Technology - CMU Office

- is located in Chiang Mai University
- conducts workshop and seminar

Kyoto Institute of Technology - KMUTT Office

- is located in KMUTT KX Building
- conducts workshops in the field of Architecture

Key Station in Thailand

<BKK Chair> Ms. Saikwan Trisunan
Chul Thai Silk Co., Ltd., Bangkok Office
Alumni of the KIT Textile Fiber and

Applied
Biology Program

<CMU Chair> Ms. Saranya Ounchanum
Former administrative staff of CMU

<Major roles of the Key Station>

- * Expanding networks among alumni in Thailand
- * Providing information to prospective students and researchers